



South Entrance Construction Underway

Symbolic Cowfish at
Bonnet House

From the CEO

South Entrance Phase One Construction Underway

Bonnet House will be reopening this historic entrance to the property. To give you a little history of the south gate we need to (as they say) go back in time. When Bonnet House was constructed in the 1920's, there was no Sunrise Boulevard and no A1A. To get to the property one would take the swing bridge located on Las Olas Blvd and proceed over the dune to the south wall of Bonnet House. When Sunrise Boulevard and A1A were built in the 1940's and the area to the south of Bonnet House began to be developed, the entrance to the estate was moved to Sunrise Boulevard. At that time the estate included all the land from Sunrise Boulevard south to the estate's south wall. A Gatehouse was built and final topped columns with a decorative iron gate marked the Sunrise entrance to the property.

Later, the original south entrance was walled up. The Bartletts so valued their privacy that they were willing to forsake the original design showcasing Frederick Bartlett's Desert Garden's arid oasis which led up to the Main House and Courtyard with its lush tropical setting. As the years passed and the property became a public museum, the circuitous nature of the entrance off Sunrise proved to be a hindrance to visitors, especially those staying or living on the beach area south of Bonnet House.

This new South Entrance will facilitate ease of pedestrian access and will serve as an anchor for the entire neighborhood. The new entrance will have the same final topped columns and decorative metal gate as the Sunrise/ Birch Road entrance. Visitors will walk in and proceed to the admission building to purchase tickets and then can easily walk along the Desert Garden road to the front door for tours.

As you can see from the photos, we are making progress in completing Phase One. The final capped columns are complete, the admission building has been started and the metal gates are in production. Soon the roof will be completed, the interior finished, the walkway poured and landscape installed. We hope to open the new entrance sometime in March 2014.

In Phase Two, the South Gate Entrance will also pay homage to even earlier residents who lived on the barrier island. These people were the Native Amer-



icans named "Tequesta" by the Spanish Conquistadors. We know that they lived on Bonnet House land dating back to at least 1300 A.D. because of archaeological finds discovered near the South Gate. Other archaeological finds included evidence of European explorers in the late 1490's and early 1500's. Phase Two will include the construction of an interpretive exhibit which will explore the Tequesta Tribe and what life was like for them on the barrier island. This exhibit will be used for children and adult education programs.

Karen Beard

Karen Beard, CEO

Cover photo: Barbie Pearson

Development News

by Patrick Shavloske

Bonnet House Receives Gift from Estate of Jean Andrews



It would be practically impossible to keep Bonnet House running without the thousands of hours Bonnet House's volunteers give to the museum each year. Jean Andrews was a

particularly devoted volunteer helping with tours and the Music Series. One of her daughters from out of state recalls more than one phone call when Jean said, "I can't talk now; I have to do some work for Bonnet House." Sadly, Jean passed away in September of last year, but her generous spirit lives on through a \$20,000 gift to Bonnet House left through her estate. In honor of her generosity and faithful commitment to Bonnet House, this gift will be applied to the reopening of the historic south gate. A portion of the gardens near the gate will be named in Jean's memory.

Anonymous Donors Help Support Bonnet House through Challenge Grant

It has been an unprecedented eight years since a hurricane has impacted Florida, but the state's geography means that the question of another hurricane coming ashore is best started by "when" not "if." With hurricane season just around the corner, long-time members of Bonnet House will know the impact tropical storms can have on Bonnet House. This picture of the Desert Garden after Hurricane Wilma is only a glimpse of the overall destruction that storm caused.

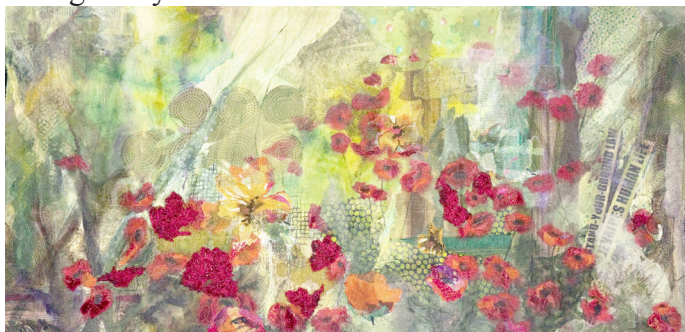
Thankfully, Bonnet House has \$275,000 in emergency reserves from an anonymous donor who was passionate about seeing that Bonnet House could weather a future disaster. Now, two additional anonymous donors have made gifts and pledges totaling \$150,000 towards this same reserve fund, bringing the balance to \$425,000. These donors hope that other supporters of Bonnet House will step forward to bring the reserve total to \$500,000. Hopefully, these funds won't be needed for many years. In the meantime, earnings will benefit the general operation of the estate.



There are several ways donors could contribute to this fund. A gift of appreciated stock would be beneficial to Bonnet House and could carry attractive tax benefits for the donor while avoiding recognition of income. Though not an immediate benefit to Bonnet House, a bequest or other planned gift would also help grow this fund. For further information on how you can contribute to the long-term stability of Bonnet House, contact Patrick Shavloske at 954-703-2603 or at patrickshavloske@bonnethouse.org.

Impressions Exhibit Opens

On March 6th Bonnet House's Impressions: A Juried Art Exhibit, opened with a festive, Caribbean themed fundraising cocktail party at the museum co-chaired by board members TJ Bedard and Dianna Silvagni. Guest juror Anthony Lauro from the Museum of Art Fort Lauderdale selected sixty-nine pieces of art by forty-four artists out of the one hundred twelve works submitted. He also selected Maya Schonenberger as winner of first place for *Stand Your Ground*, Tammy Seymour as winner of second place for *Step On It* and Gregory Little as winner of third place for *Everglades Meadow*. Twyla Gettert, Dwight Hoffman, Jorge Leon, Mark Sesto and Marilyn Johansen received honorable mention awards and Mark Sesto received the People's Choice Award. Impressions will remain on exhibit during regular tour hours through May 4th.



1st Place Winner, Maya Schoenberger

Conservation Corner

by Stephen Draft

Concrete Restoration Completed



The Concrete Restoration project has been completed. It started as seven areas that needed attention and by the time we finished with the project ten spots were repaired. Jackhammers were used to remove affected concrete until un-corroded rebar was found. New specially coated rebar was installed and then forms

were built and new concrete poured. Finally a sealer and two coats of finish paint were applied.

Estate Repairs

Chimneys repaired and sealed



The cover over the top of the chimney from the kitchen had several cracks and some missing pieces. It was removed and a form was built. Concrete was mixed and carried up ladders to fill the forms. At the same time all five chimneys on the property

were sealed with concrete at the top. We have had problems with raccoons, squirrels, tree rats, bees, and wasps coming down the chimneys and causing damage.

Plumbing Repairs and Upgrades

In a number of places around the property corroded pipes have been replaced. New shut offs have also

been added to allow us to shut off water to an isolated area while doing repairs. Toilets have also been replaced with new low water use ones.



Upstairs Veranda Floor Painting



The upstairs veranda floor paint was peeling revealing several old layers of paint and in many places bare wood. It was power washed, scraped, sanded

primed and painted. The caulk between the floors trim and the wall was also replaced.

Education Programs

by Marlene Schotanus

Education is Alive and Well at Bonnet House

School tours were expanded this year by the addition of The Last Egret Tour which has been a popular program for the school children. Through BECON Distance Learning we are reaching schools throughout Broward County that we never had contact with before. This technology has allowed us to better promote the Bonnet House name and attract new schools in the area.

New classes have been added to our adult programs too. We have surpassed last year's numbers, and we are not letting up. In April, we have the Art Workshop for Girl Scouts, Cruising Down the River Boat Tour with speakers Everett Oscella, Mayor Jack Seiler and Historian Bill Sydnor. On April 26 we have Earth Day with the Youth Symphony, storytelling and a bird demonstration presented by the Seminole Indians.

Symbolic Cowfish at Bonnet House

by George Castleman

A visitor on my tour the other day spoke up when I said we didn't know why Frederic had chosen a cowfish for the sculptures over the front and east doors. She said she had been born and raised in Egypt, where, from ancient times, fish sculptures have been used to symbolize happiness, life and regeneration. The eye of the fish is to ward off evil and the devil.

Wonderful visitors! New information for me, and something to think about.



Obelisks, symbols of welcome and ceremony, began in Egypt. And perhaps Frederic was referencing the beginnings of Art by placing Egyptian symbols at the entrance. And perhaps that's why he chose a fish for his beach house instead of a more decorative seahorse, or nautilus or scallop shell. We know that Frederic, Helen, Hugh and Clay visited Egypt in 1924-25. But according to the video, the cowfish sculptures were already in place. Frederic may have learned about fish symbolism during his years of art studies, and I wonder if we have any other examples of Egyptian-influenced art. Greek and Roman, yes, but Egyptian? I made a quick survey of his art books, but found nothing.

And why the cowfish? Why not a sailfish or swordfish or something more dramatic than an obscure tropical reef fish?

I did some online research into cowfish. Per Wikipedia, they



are members of the *Ostraciidae* family, squared, bony fish with hexagonal or honeycomb scales that fuse into a kind of armor that makes them difficult for predators to eat. The scales also secrete a toxic mucus. Because of their unwieldy bodies they can only swim forward or backward, relying on currents to change direction. Other members of the family are boxfishes and trunkfishes, and they are common in tropical waters around the world. They can grow up to 20 inches.

There are at least three varieties of cowfish: longhorn, scrawled, and thornback -- and guess what, they are colored bright yellow with blue spots or markings! As far as we know, our cowfish have always been white, and they were installed before Evelyn and Frederic painted the place.



There is a cute website with more cowfish facts:
<http://www.cowfish.20m.com/custom.html>



The Lily Pad

Newsletter of the Bonnet House Alliance

A Note From the Alliance President

By Sue Nesbit



At this time of the year the Alliance was very busy preparing for our annual Entirely Entertaining XIX Luncheon. Chairman, Suzan Hinckley worked endless hours to prepare for this wonderful day! It was a delightful day and we enjoyed the beautifully decorated tables inspired by our thirty creative designers.

Our guests dined on a delicious luncheon prepared by Sandy James Fine Foods. The baskets and silent auction were fabulous this year! A very special thank you to our sponsors of this event, Genspring Family Services, Leo Goodwin Foundation, Publix Supermarket Charities, and Ann Powell for their continued support of this fund-raiser. We also wish to express a thank you to all the local businesses who contribute as well. Lastly, I thank all of the staff and volunteers who made this event possible and successful.

As spring approaches, I hope you will join us at the upcoming events. Our next General Membership Meeting will be a "Wine and Appetizer Get-together" held on the Veranda at Bonnet House on April 7th from 5:00 to 7:00 p.m. On May 12th, our General Membership Meeting and Luncheon will be held at the new Grateful Palate overlooking the beautiful Intracoastal with the Installation of Officers for the upcoming year 2014 –2015. I know you will not want to miss this wonderful event and to welcome our new Officers.

On a personal note, I would like to thank everyone for your continued support and loyal dedication to the Bonnet House Alliance. I encourage the new volunteers to take an active part in the upcoming activities. If you are interested in a Board position or committee assignment for next year's events, please contact me. Each and every one of you is very important to the success of the Bonnet House Alliance.

A Thank You for the Entirely Entertaining XIX Chairman

Dear Staff, Alliance Members, Committee Chairs, Volunteers, and Table Designers,

To the Bonnet House Staff, Alliance Members, Committee Chairs and Volunteers, I appreciate your time, talent, and hard work in making "EE XIX" a successful event. A special thank you to all of you for the splendid job you did at our event. Your positive attitude, enthusiasm, willingness to help, and attention to detail helped us to succeed in many ways.

On behalf of the Bonnet House Alliance "Entirely Entertaining XIX" Chairman and Committee Chairs,

we wish to extend our sincerest thanks to Sandy James Fine Food and Productions, and his staff for our delicious luncheon.



Marti Howland, Kathy Shampain, Sue Nesbit, Sondra St. Martin & Susan Howell

To our Table Designers, we thank you for the beautiful and creative table designs. Without your talent, this event would not be possible. We are so proud to continue the time-honored tradition of gracious hospitality developed by Evelyn F. Bartlett at Bonnet House.

To all our Sponsors, Leo Goodwin Foundation, Genspring Family Services, Publix Super Markets Charities, Ann Powell, and individual donors, we extend a very special thank you for ensuring that our beloved Bonnet House legacy is preserved for future generations to enjoy.

Again, thank you to all of our valued friends of Bonnet House.

Suzan Hinckley, Chairman



BONNET HOUSE ACTIVITIES CALENDAR

BONNET HOUSE ALLIANCE BOARD FOR 2013-2014

The Nominating Committee is happy to announce the slate of Officers for the upcoming year:

President – Susan Howell
First VP (Programs) - Brooke Trace
Second VP (Membership) – John Lucas
Third VP (Ways and Means) Pending
Recording Secretary – Patsy Staletovich
Corresponding Secretary – Kathy Shampaine
Treasurer – Grace Antonello
Nominating Chair – Anna Laviolette
Committee - Barbara Dix , Ellen Anderson,
Geraldine Braatz, Justina Furey.

Alliance Calendar: March - May 2014

April 7	General Membership Meeting on Veranda at Bonnet House 5-7 PM
May 5	Joint Board Meeting 11 AM
May 12	General Membership Meeting Luncheon and Installation of Officers 11AM Grateful Palate on Intracoastal

Concerts Under the Stars

April 10

7:00 pm - 9:00 pm

FLORIDA GRAND OPERA

\$35 Members, \$40 Non-members

bonnethouse.org

Cool Saturdays

Summer Special

9:00 am - 4:00 pm

1ST SATURDAY, JULY - OCTOBER

\$10 Adults, Free for kids 12 & under

Earth Day

April 26

9:00 am - 4:00 pm

BONNET HOUSE EARTH DAY

Music, Sing-A-Longs, Activities

\$10 Adults, Free for kids 12 & under



THE VILLAGE
AT VICTORIA PARK

BETWEEN THE CITY
AND THE BEACH

New Urban  Communities

BBX Capital
REAL ESTATE

WWW.NEWURBANCOMMUNITIES.COM
(954) 524-8001





900 NORTH BIRCH ROAD
FORT LAUDERDALE, FLORIDA 33304

www.bonnethouse.org

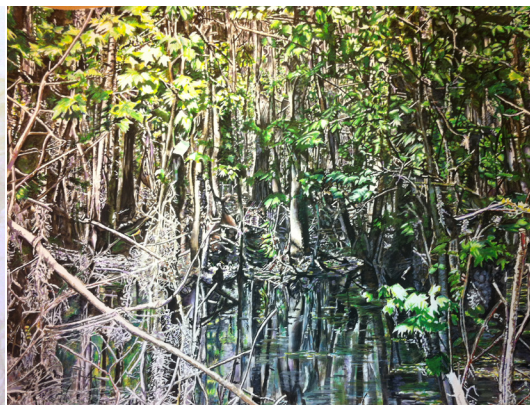
Non Profit
Organization
U.S. Postage
PAID
Ft. Lauderdale, FL 33310
Permit No. 4398

Impressions

A Juried Art Exhibit 2014



Tammy Seymour, *Step On It*, Watercolor



Mark Sesto, *Mangrove Jungle*, Watercolor

Now On View



Funding for this organization is provided in part by the Broward County Board of County Commissioners as recommended by the Broward Cultural Council.



Sponsored in part by the State of Florida, Department of State, Division of Cultural Affairs and the Florida Council on Arts and Culture.

